

Troubleshooting Guide

Do It Yourself

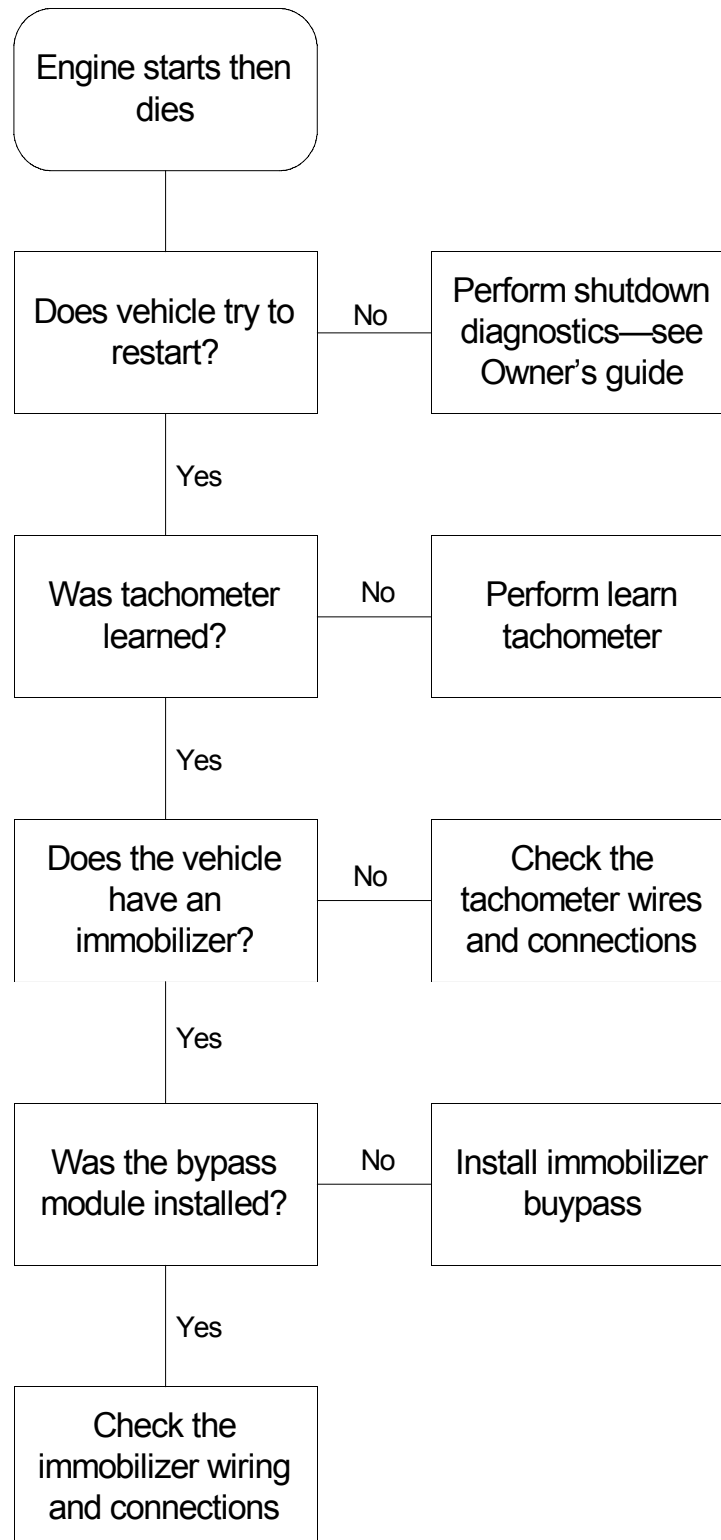
Table of Contents

Engine starts then immediately stops	3
Engine starts, runs for 10-seconds, then stops	4
Starter will not stop cranking	5
Starter will not crank	6
A/C and heater are not working	7
Alarm goes off while driving vehicle	8
Engine cranks, but won't start	9
Vehicle won't start in cold weather or early in morning	10
Remote start triggers alarm at startup/shutdown (alarm is armed)	11
System does not respond to remote	12
The siren will not chirp	13
The siren moans	14
Windows roll up, when ignition is shut off (529T or 530T options)	15
False alarms	16
Shock sensor does not work	17

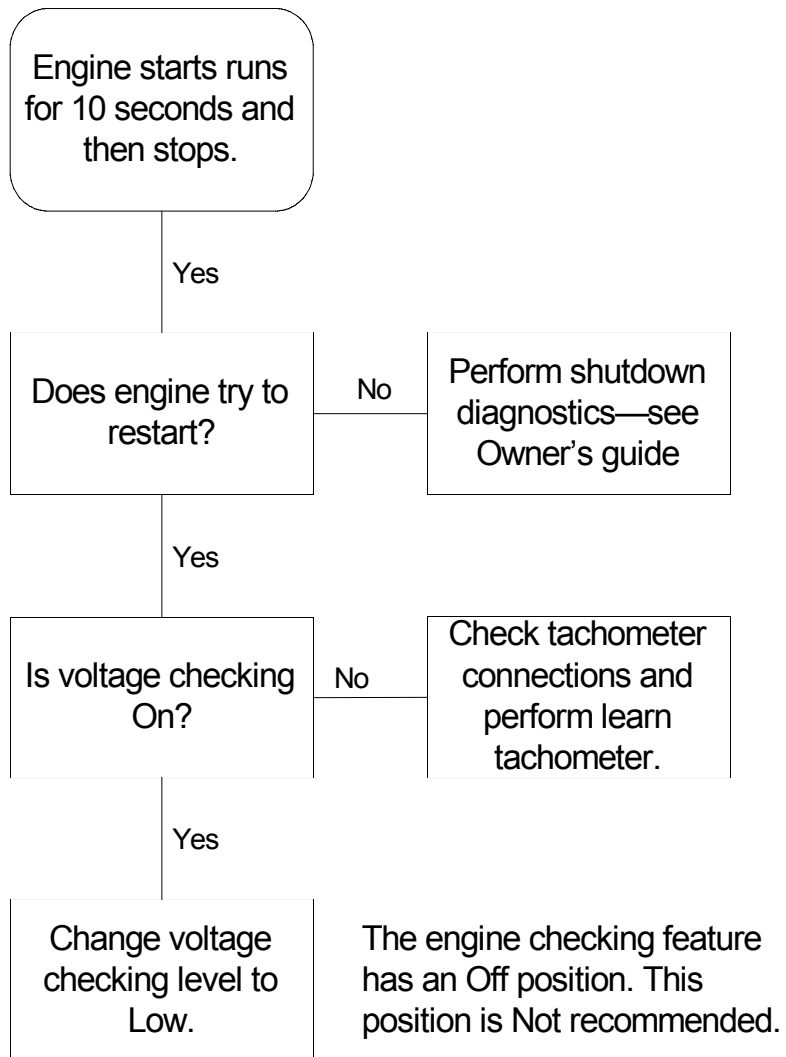
Introduction

This manual is a reference for store personnel to provide customer troubleshooting guidance. The problems and related trouble shooting steps listed in this guide are the most common and prevalent installation problems that Directed Electronics, Inc. Technical Service department receives.

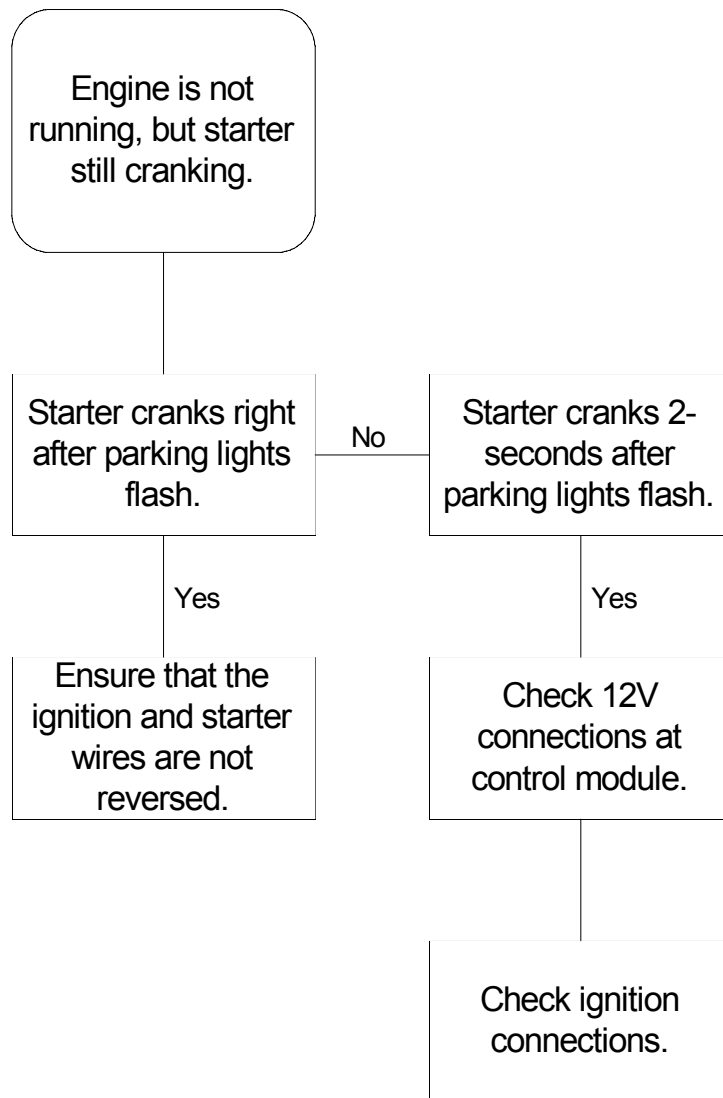
Engine starts then immediately stops



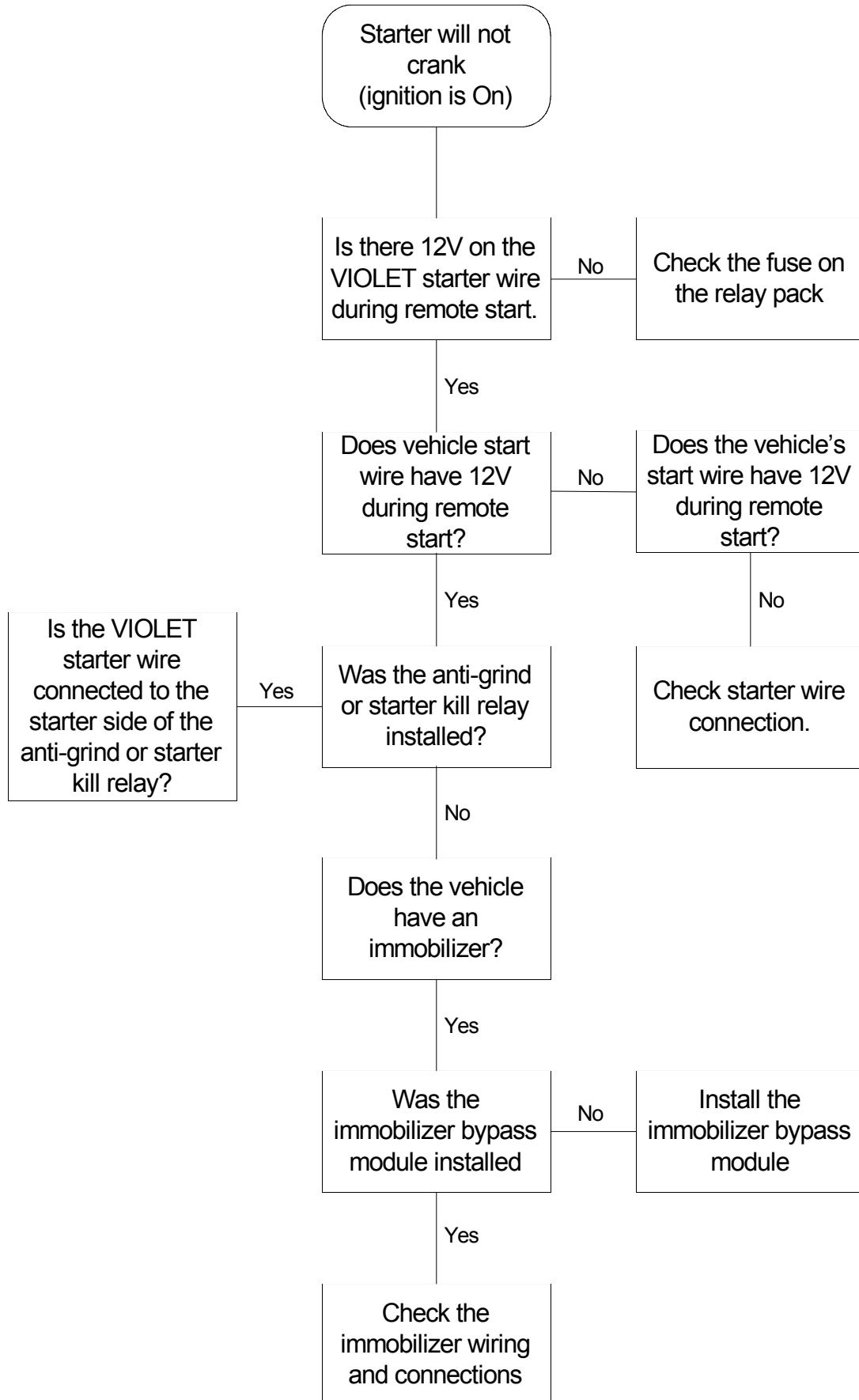
Engine starts, runs for 10-seconds, then stops



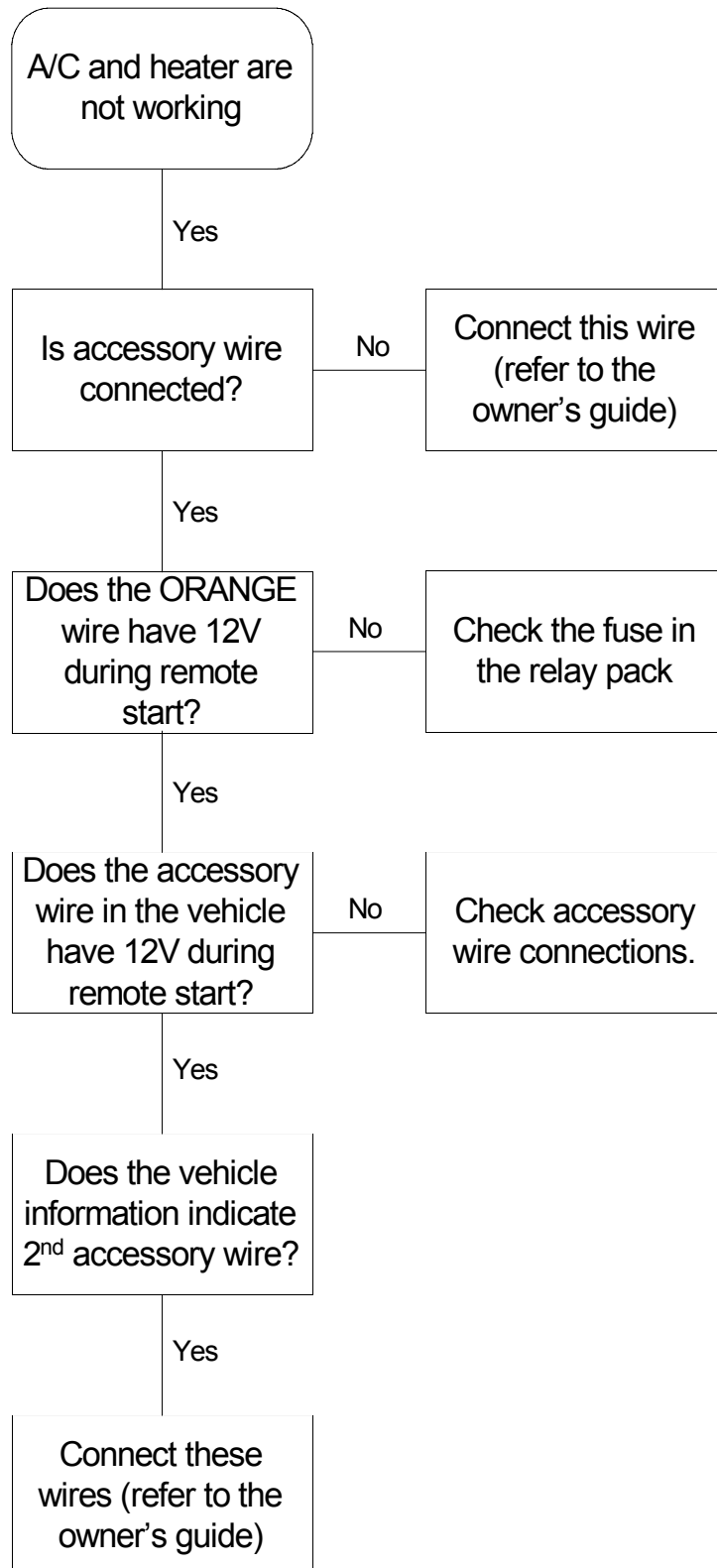
Starter will not stop cranking



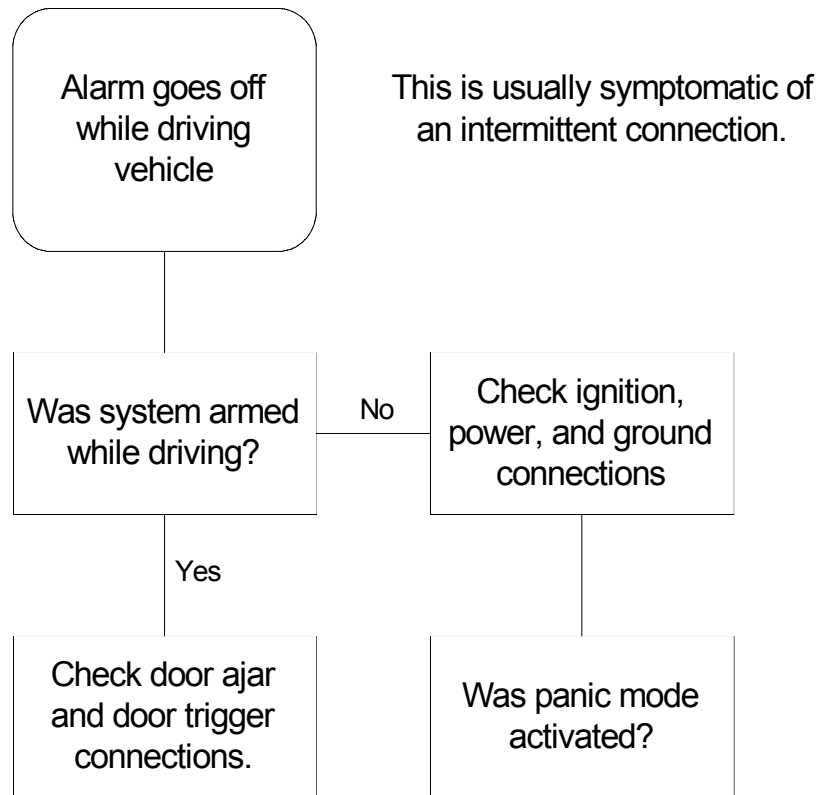
Starter will not crank



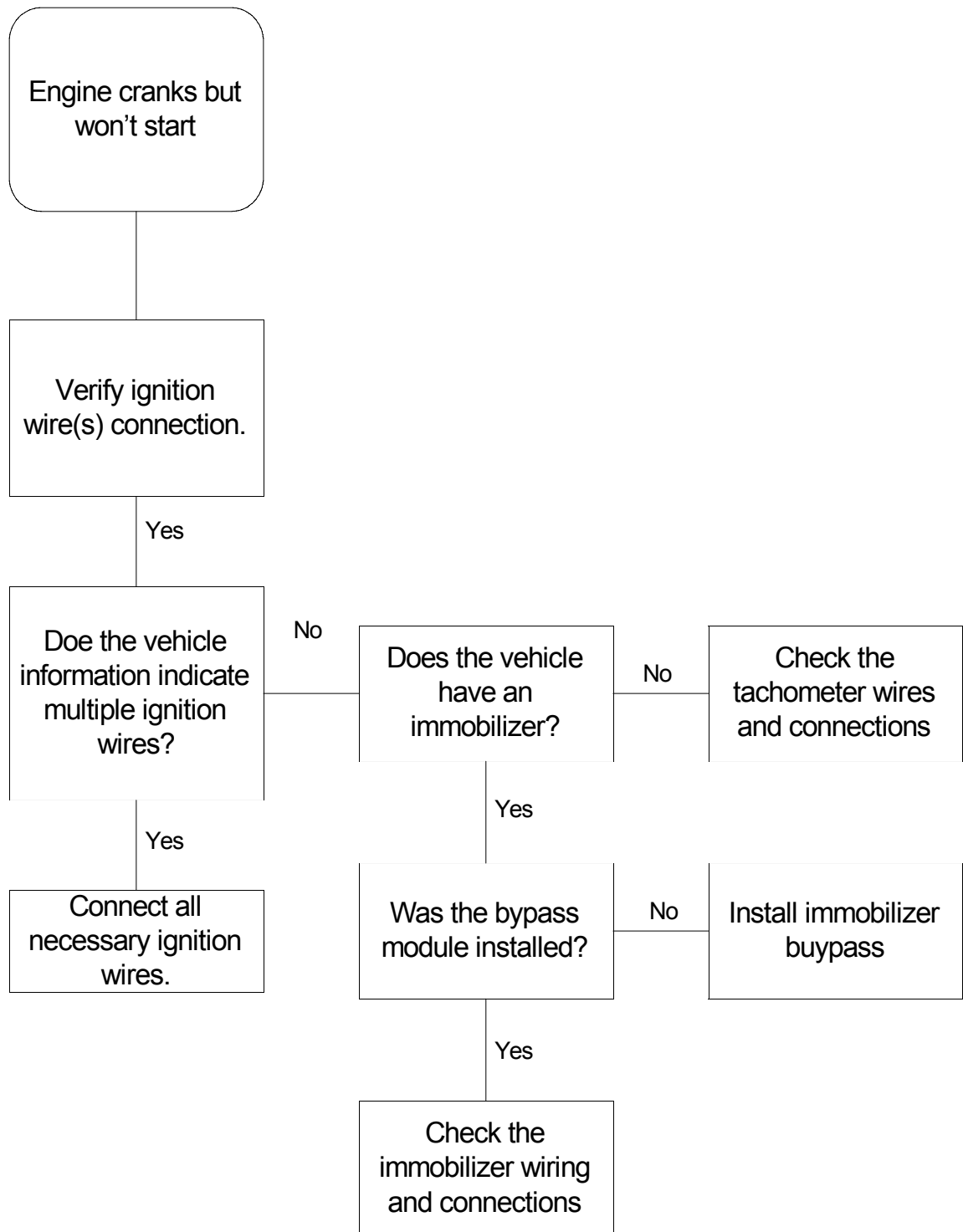
A/C and heater are not working



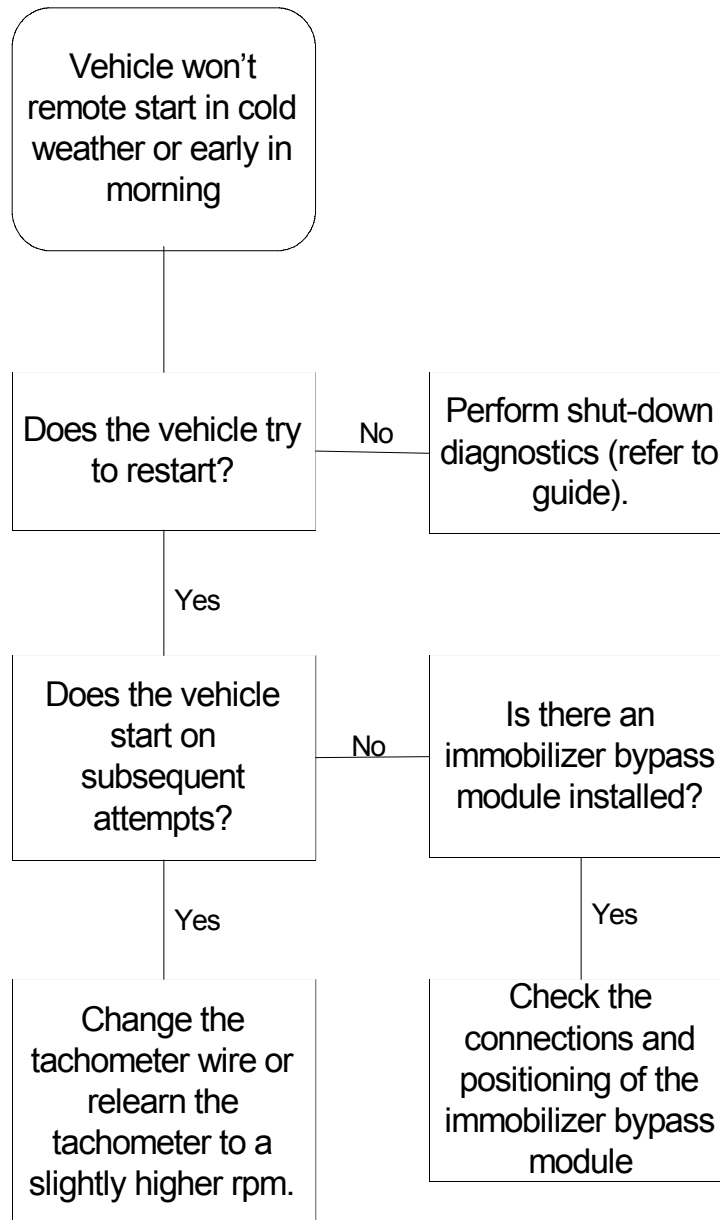
Alarm goes off while driving vehicle



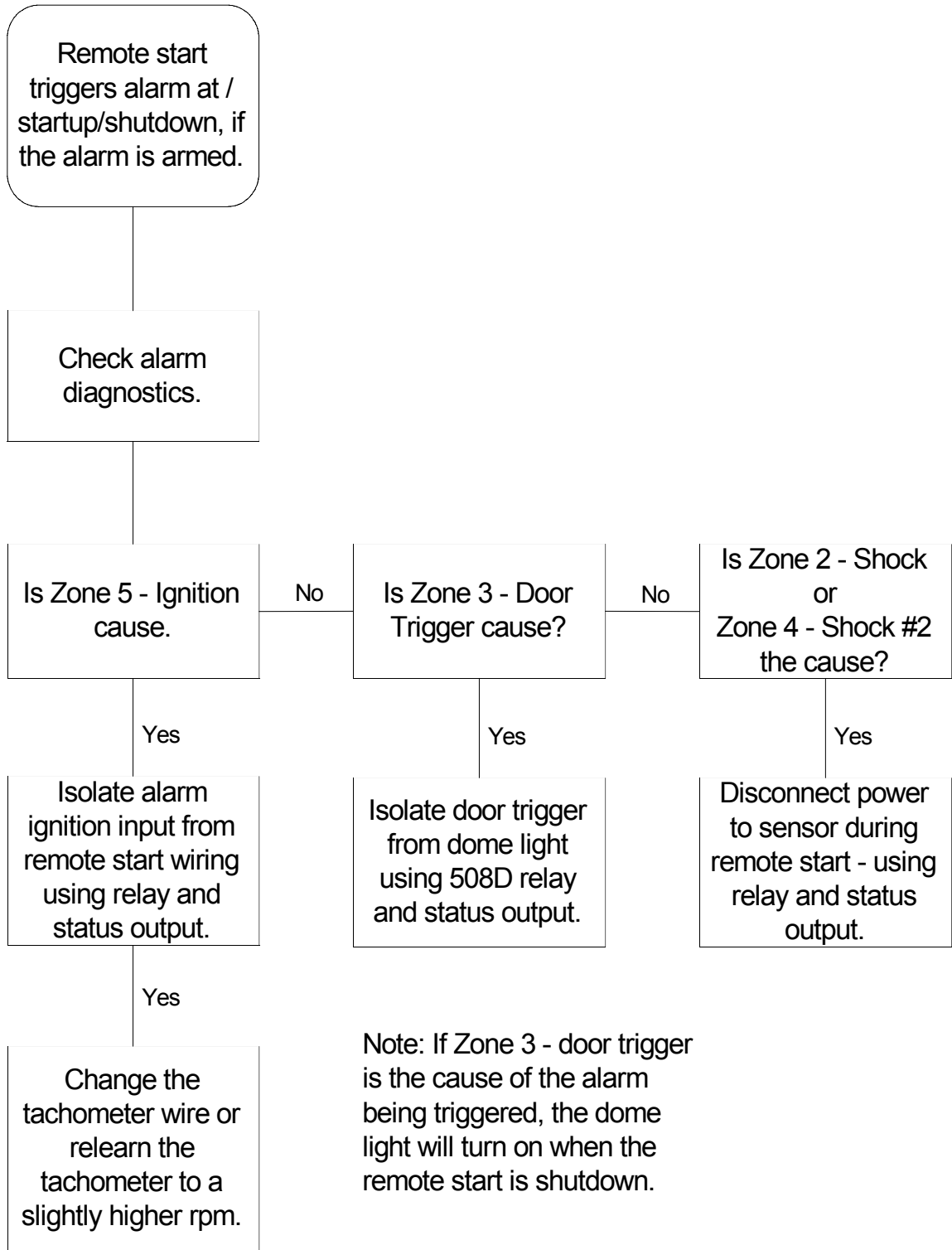
Engine cranks, but won't start



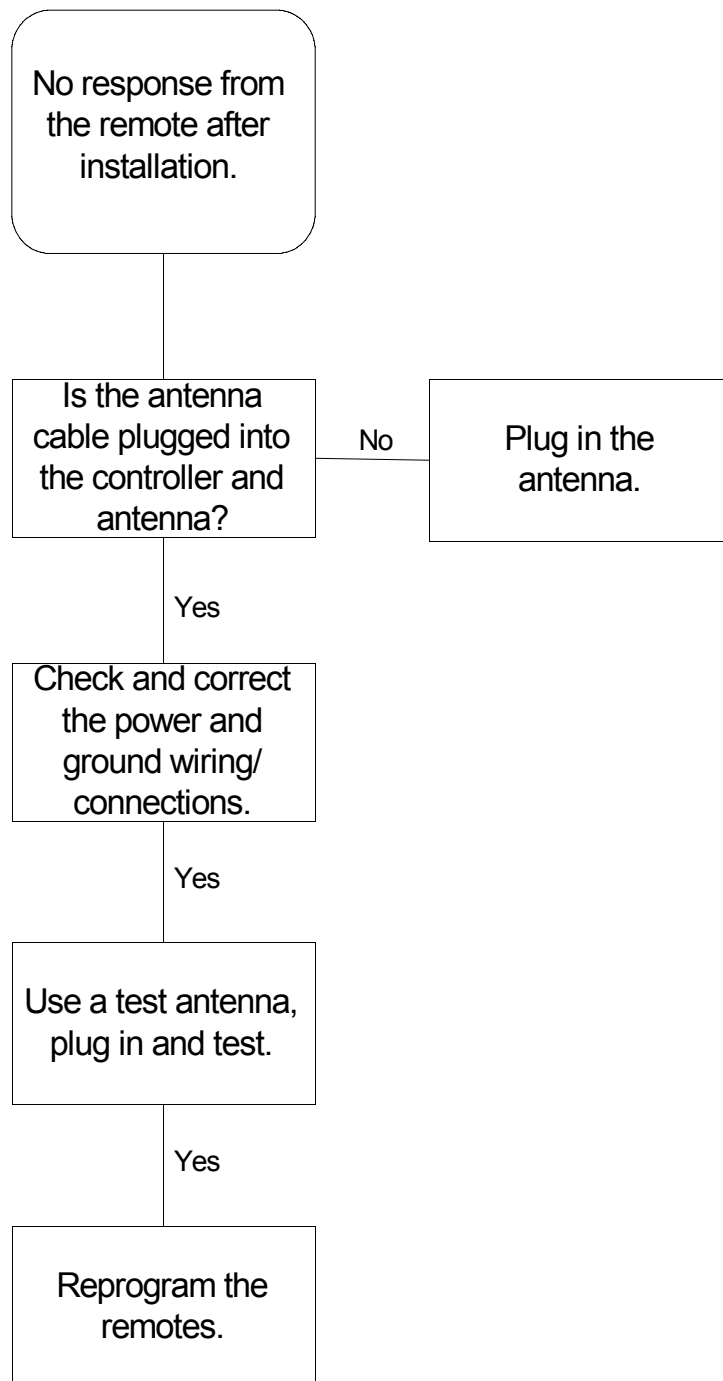
Vehicle won't start in cold weather or early in morning



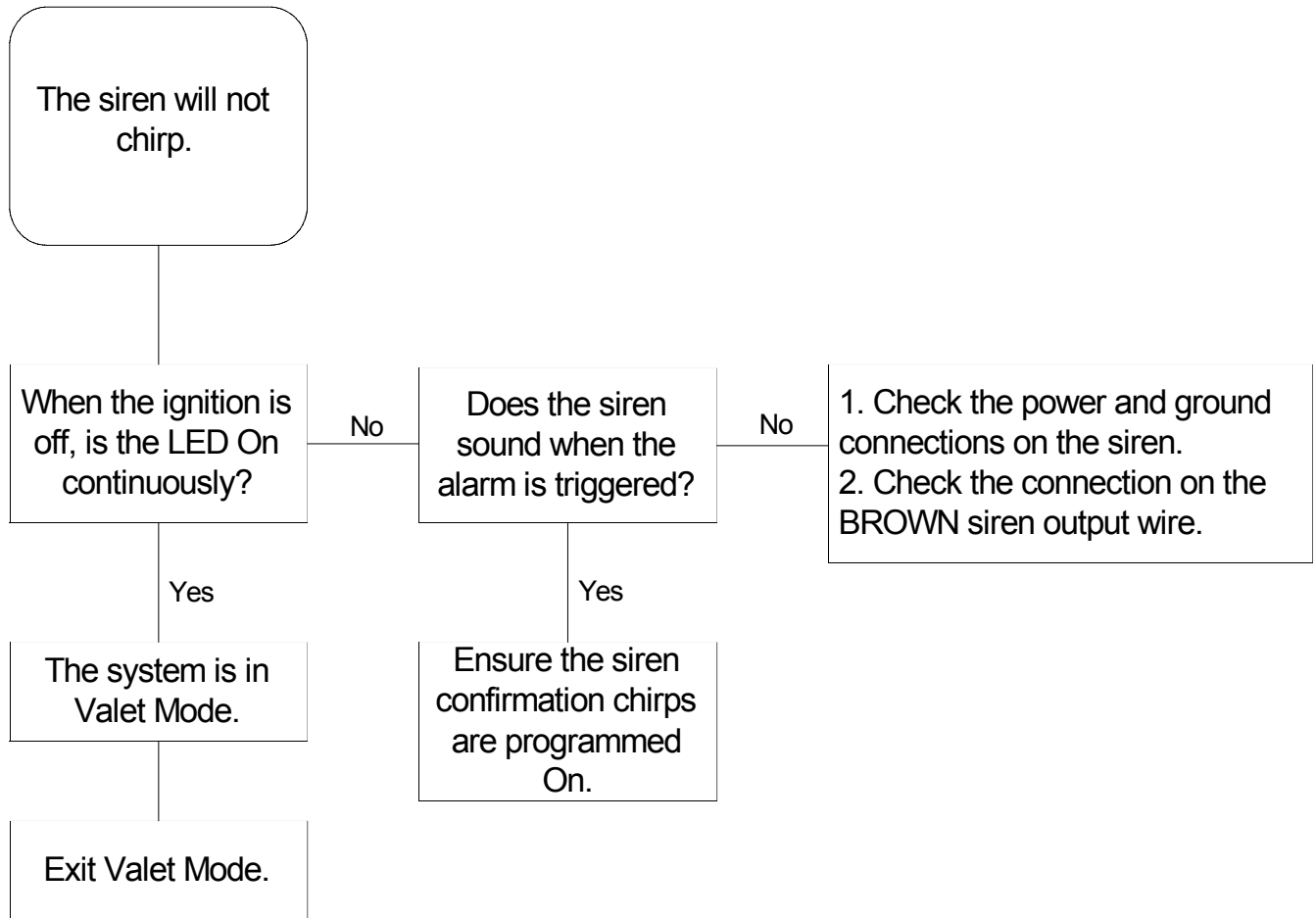
Remote start triggers alarm at startup/shutdown (alarm is armed)



System does not respond to remote



The siren will not chirp



The siren moans all the time?

Check the ground on the siren and the controller.

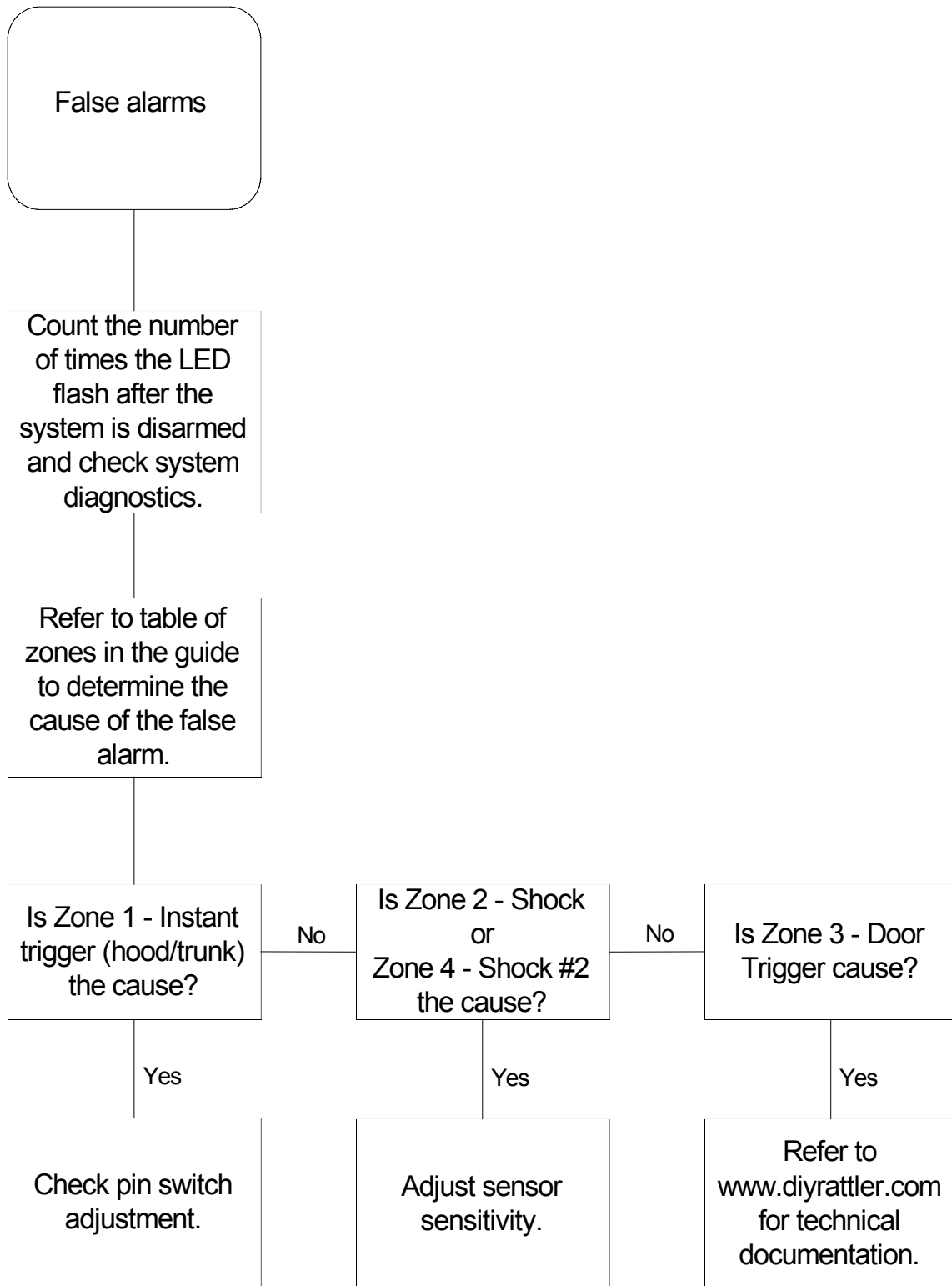
This symptom is caused by an poor ground connection. Always ground directly by using the chassis. Do NOT ground using a bracket, door or hood panel.

Windows roll up, when ignition is shut off (529T or 530T options)

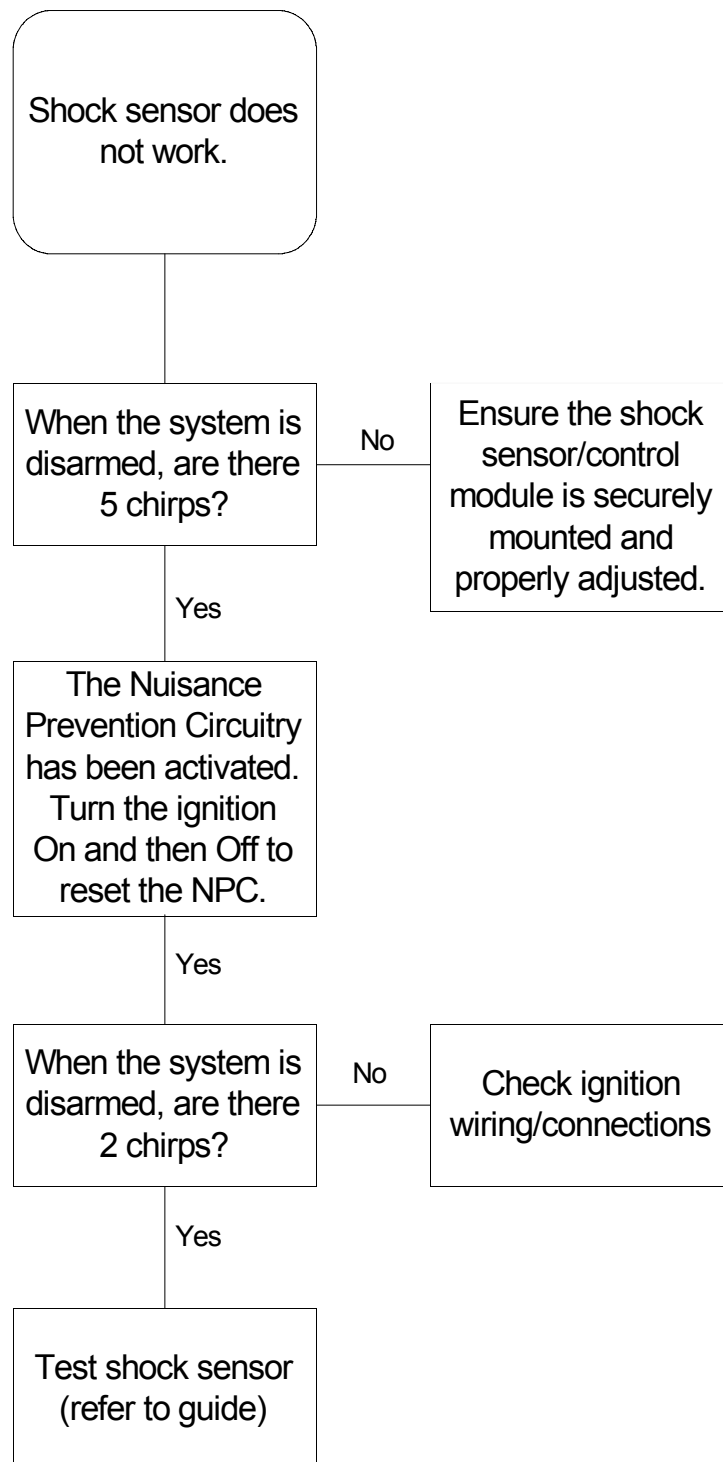
When I shut the
key off the windows
roll up.

Diode isolate the
window roll-up
ORANGE wire
(ground when
armed) on the
starter kill relay.

Refer to www.diyrattler.com for
technical document.



Shock sensor does not work



The company behind this system is Directed Electronics, Inc.

Since its inception, Directed Electronics has had one purpose, to provide consumers with the finest vehicle security and car stereo products and accessories available. The recipient of nearly 100 patents and Innovations Awards in the field of advanced electronic technology, DIRECTED is ISO 9001 registered.

Quality Directed Electronics products are sold and serviced throughout North America and around the world.

Call (800) 274-0200 for more information about our products and services.



Directed Electronics is committed to delivering
world class quality products
and services that excite and delight our customers.



Directed Electronics, Inc.
Vista, CA 92081
www.directed.com

© 2003 Directed Electronics, Inc. - All rights
reserved
TSG 7-03