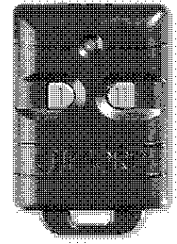


Coding Instructions for Clifford Remote Control (Part #904010)



The 904010 remote control serves as a replacement transmitter for the former Clifford P/N 60-347-U transmitter. All transmitter features remain the same.

To code the Clifford remote control, carefully follow the steps outlined in this guide.

CAUTION: *The Clifford remote control enclosed in this package is not coded. Do **NOT** install the battery until the unit has been properly coded, otherwise, the battery will be shorted!*

FCC/ID Notice

This device complies with Part 15 of FCC rules. Operation is subject to the following two conditions: (1) This device may not cause harmful interference, and (2) This device must accept any interference received, including interference that may cause undesired operation.

CAUTION: *Changes or modifications not expressly approved by the party responsible for compliance could void the user's authority to operate this device.*

Figuring the Trace Cut Code

1. First, obtain the transmitter's numerical code from one of the following sources:
 - The original transmitter.
 - The control unit's coding tag.
2. Translate the "numerical" code into the "trace-cut" code in the following manner:
 - a. Disregard the **first digit** of the numerical code, which will be either a "0" or a "1". This digit will not be translated into "trace-cut" code.
 - b. The **remaining four digits** of the numerical code will be assigned two (2) letters each.
 - c. It is extremely important that the letters assigned to the last four digits of the numerical code are written in the same sequence as the digits appear in the numerical code (from left to right)!
 - d. When complete, each numerical code must be translated into **exactly** 8 letters. For each letter, the corresponding trace(s) must be cut:
 - For the letter "U", cut the UPPER trace.
 - For the letter "L", cut the LOWER trace.
 - For the letter "B", cut BOTH traces.
 - e. The last four digits of the numerical code should be translated as follows:

"0" = "UU"	"3" = "LU"	"6" = "BU"
"1" = "UL"	"4" = "LL"	"7" = "BL"
"2" = "UB"	"5" = "LB"	"8" = "BB"

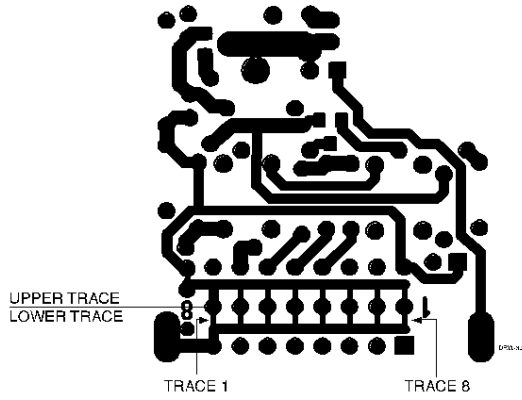
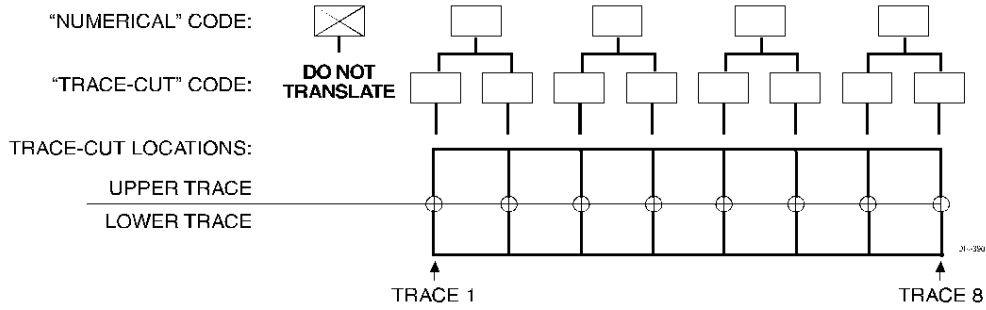
NOTE: *There will never be a situation in which the number of letters is not exactly 8, and each trace is not cut at least once.*

Trace-Cut Code Worksheets

Use these worksheets to figure the transmitter's trace-cut code.

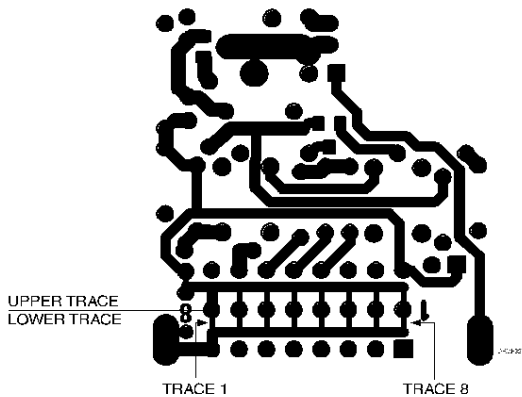
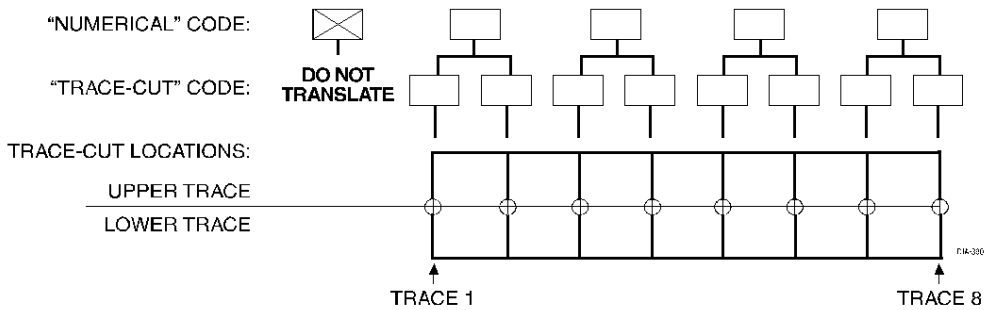
System Type: _____ Last 4 Digits of Transmitter's Numerical Code: _____

Translation of Numerical Code into Trace-Cut Locations:



System Type: _____ Last 4 Digits of Transmitter's Numerical Code: _____

Translation of Numerical Code into Trace-Cut Locations:



Cutting the Traces and Installing the Battery

After you have written the trace-cut code on the worksheet and marked on the facsimile of the transmitter's printed circuit board the actual locations where the cuts are going to be made (see *Examples for Figuring the Trace-Cut Code* section of this guide), proceed with the following steps:

1. Remove the screw from the back of the remote control and separate the case.
2. Remove the printed circuit board from the transmitter.
3. Place the circuit board with its L.E.D. switch facing down.
4. Verify that the circuit board's orientation is exactly as shown in the provided facsimile.
5. Verify that the traces to be cut are all marked with an "X" on the facsimile of the printed circuit board.
6. Use an art knife (Xacto) to cut the traces in exactly the same locations as you have marked on the facsimile.
7. Install the battery, noting the proper polarity.
8. Reassemble the remote control and test its functionality.

Other Applications for the Clifford Remote Control

CODE-LEARNING SYSTEMS

If coding the 904010 remote for use with a "code-learning" system, each trace must be cut at least once, either on the upper or lower trace. The LED will blink rapidly to confirm that all the traces have been properly cut.

AVITAL SYSTEMS

If using the 904010 remote with the Avital® Phoenix®, Hurricane®, Diablo®, Diablo²®, or Tornado²® systems, make sure that both the upper and lower portions of trace 8 are cut, in addition to cuttings traces 1-7 as required by the trace-cut code.